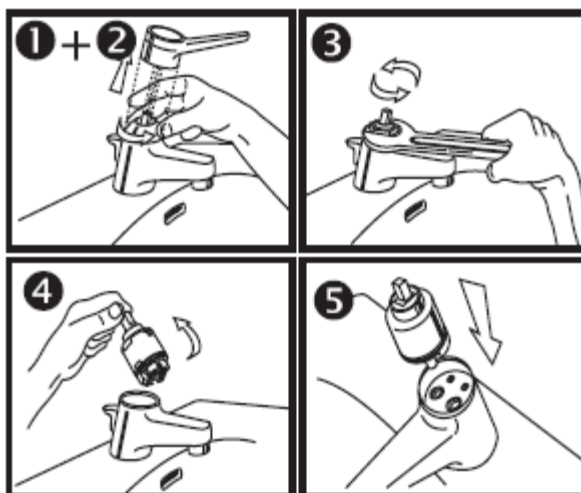


## Cartridge Change

**IMPORTANT:** Before cartridge change, the water supply must be closed. Make sure that both angle valves are shut-off.

1. Remove the lever.
2. Remove the cartridge cover, these are usually screwed, or only stuck.
3. Then loosen the nut with a tool.
4. Remove the old cartridge. Be careful not to leave any residue (example: the remains of Seal).
5. Insert the new cartridge. The cam feet of the cartridge must fit exactly in the Snap holes. Only then is the cartridge really tight.



6. Now fix the cartridge by tightening the nut again, it is optimal 10 Newton.
7. Install the cartridge cover.
8. Mount the lever.

**NOTE:** The cartridges supplied by us could vary in color, body diameter and in the form. Important is that the cams / legs of the replacement cartridge match with the holes in the faucet body. Also the diameter of the cartridge bottom and the height are identical with the old cartridge.